



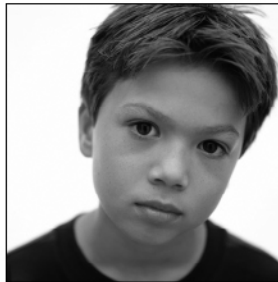
Detailed Summary Tables— Western Region (3)

North Carolina Youth Tobacco Survey 2009

Middle School and High School Tables

N.C. Department of Health and Human Services

Surveillance and Evaluation Team
Tobacco Prevention and Control Branch
Department of Health and Human Services
1932 Mail Service Center
Raleigh, NC 27699-1932
919-707-5400
www.tobaccopreventionandcontrol.ncdhhs.gov



State of North Carolina | Beverly Perdue, Governor
Department of Health and Human Services
Lanier M. Cansler, Secretary
www.ncdhhs.gov

N.C. DHHS is an equal opportunity employer and provider. 03/10

List of Middle School Tables

Table MS-1	Percentage of middle school students who report ever using* any tobacco product (cigarettes, cigars, smokeless tobacco), by gender, grade, and race/ethnicity: North Carolina Youth Tobacco Survey, 2009—Mountain (Western).
Table MS-2	Percentage of middle school students who report current use of any tobacco product (cigarettes, cigars, smokeless tobacco, pipes, or bidis) by gender, grade, and race/ethnicity: North Carolina Youth Tobacco Survey, 2009—Mountain (Western).
Table MS-3	Percentage of middle school students who report first using* cigarettes before 11 years of age and ever smoking 100 cigarettes in their lifetime, by gender, grade, race/ethnicity: North Carolina Youth Tobacco Survey, 2009—Mountain (Western).
Table MS-4	Percentage of middle school students who report smoking cigarettes on school property during the 30 days preceding the survey, by gender, grade, race/ethnicity: North Carolina Youth Tobacco Survey, 2009—Mountain (Western).
Table MS-5	Percentage of middle school students who report frequently using* cigarettes, by gender, grade, race/ethnicity: North Carolina Youth Tobacco Survey, 2009.
Table MS-6	Percentage of middle school current smoking students who report their primary sources of cigarettes, by social source, direct purchase, and other sources: North Carolina Youth Tobacco Survey, 2009—Mountain (Western).
Table MS-7	Percentage of middle school students who report smoking intentions, perceptions about smoking and susceptibility* to start smoking, by gender, grade, and race/ethnicity: North Carolina Youth Tobacco Survey, 2009—Mountain (Western).
Table MS-8	Percentage of middle school students who report media and advertising influence regarding tobacco and receptivity to tobacco advertising*, by gender, grade, and race/ethnicity: North Carolina Youth Tobacco Survey, 2009—Mountain (Western).
Table MS-9	Percentage of middle school students who report exposure to anti-tobacco education in school or community in the past year, by gender, grade, and race/ethnicity: North Carolina Youth Tobacco Survey, 2009—Mountain (Western).
Table MS-10	Percentage of middle school never smoking students who report they were in the same room or rode in car with someone who was smoking on 1 of the past 7 days, by gender, grade, race/ethnicity: North Carolina Youth Tobacco Survey, 2009—Mountain (Western).
Table MS-11	Percentage of middle school never and current smoking students who live with someone who currently smokes cigarettes, by gender, grade, and race/ethnicity: North Carolina Youth Tobacco Survey, 2009—Mountain (Western Region).
Table MS-12	Percentage of middle school current smoking students who report quitting perceptions, intention to quit and cessation practices, by gender, grade, and race/ethnicity: North Carolina Youth Tobacco Survey, 2009—Mountain (Western).
Table MS-13	Percentage of middle school never and current smoking students who report smoking perceptions, by gender, grade, and race/ethnicity: North Carolina Youth Tobacco Survey, 2009—Mountain (Western).
Table MS-14	Percentage of middle school never and current smoking students who report smoking perceptions, by gender, grade, and race/ethnicity: North Carolina Youth Tobacco Survey, 2009—Mountain (Western).

List of High School Tables

Table HS-1	Percentage of high school students who report ever using* any tobacco product (cigarettes, cigars, smokeless tobacco) by gender, grade, and race/ethnicity: North Carolina Youth Tobacco Survey, 2009—Mountain (Western).
Table HS-2	Percentage of high school students who report current use of any tobacco product (cigarettes, cigars, smokeless tobacco, pipes, or bidis) by gender, grade, and race/ethnicity: North Carolina Youth Tobacco Survey, 2009—Mountain (Western).
Table HS-3	Percentage of high school students who report first using* cigarettes before 11 years of age and ever smoking 100 cigarettes in their lifetime, by gender, grade, race/ethnicity: North Carolina Youth Tobacco Survey, 2009—Mountain (Western).
Table HS-4	Percentage of high school students who report smoking cigarettes on school property during the 30 days preceding the survey, by gender, grade, race/ethnicity: North Carolina Youth Tobacco Survey, 2009—Mountain (Western).
Table HS-5	Percentage of high school students who report frequently using* cigarettes, by gender, grade, race/ethnicity: North Carolina Youth Tobacco Survey, 2009—Mountain (Western).
Table HS-6	Percentage of high school current smoking students who report their primary sources of cigarettes, by social source, direct purchase, and other sources: North Carolina Youth Tobacco Survey, 2009—Mountain (Western).
Table HS-7	Percentage of high school students who report smoking intentions, perceptions about smoking and susceptibility* to start smoking, by gender, grade, and race/ethnicity: North Carolina Youth Tobacco Survey, 2009—Mountain (Western).
Table HS-8	Percentage of high school students who report media and advertising influence regarding tobacco and receptivity to tobacco advertising*, by gender, grade, and race/ethnicity: North Carolina Youth Tobacco Survey, 2009—Mountain (Western).
Table HS-9	Percentage of high school students who report exposure to anti-tobacco education in school or community in the past year, by gender, grade, and race/ethnicity: North Carolina Youth Tobacco Survey, 2009—Mountain (Western).
Table HS-10	Percentage of high school never smoking students who report they were in the same room or rode in car with someone who was smoking on 1 of the past 7 days, by gender, grade, race/ethnicity: North Carolina Youth Tobacco Survey, 2009—Mountain (Western).
Table HS-11	Percentage of high school never and current smoking students who report living with someone who currently smokes cigarettes, grade, and race/ethnicity: North Carolina Youth Tobacco Survey, 2009—Mountain (Western Region).
Table HS-12	Percentage of high school current smoking students who report quitting perceptions, intention to quit and cessation practices, by gender, grade, and race/ethnicity: North Carolina Youth Tobacco Survey, 2009—Mountain (Western).
Table HS-13	Percentage of high school never and current smoking students who report smoking perceptions, by gender, grade, and race/ethnicity: North Carolina Youth Tobacco Survey, 2009—Mountain (Western).
Table HS-14	Percentage of high school never and current smoking students who report smoking perceptions, by gender, grade, and race/ethnicity: North Carolina Youth Tobacco Survey, 2009—Mountain (Western).

TABLE MS-1. Percentage of middle school students who report ever using* any tobacco product (cigarettes, cigars, smokeless tobacco) by gender, grade, and race/ethnicity: North Carolina Youth Tobacco Survey, 2009—Mountain (Western Region).

	Any tobacco	Cigarettes	Cigars	Smokeless tobacco
Gender				
Female	29.7 (±6.9)†	21.9 (±6.3)	12.5 (±2.9)	11.7 (±4.0)
Male	37.3 (±5.6)	23.8 (±4.6)	18.8 (±3.0)	20.2 (±4.3)
Grade				
Sixth	23.9 (±8.6)	14.9 (±6.6)	8.1 (±4.0)	11.5 (±4.5)
Seventh	35.8 (±9.0)	25.3 (±8.9)	16.7 (±4.7)	16.5 (±4.9)
Eighth	40.9 (±7.8)	28.3 (±7.0)	22.1 (±4.8)	20.0 (±4.9)
Race/ethnicity				
White	33.7 (±6.1)	23.2 (±5.7)	15.3 (±3.0)	17.2 (±2.8)
Black	36.5 (±7.7)	24.1 (±5.6)	19.5 (±6.0)	11.0 (±5.4)
Hispanic	26.0 (±11.3)	16.5 (±8.3)	13.9 (±6.9)	8.9 (±7.2)
Other	35.0 (±14.0)	25.3 (±14.2)	15.9 (±7.1)	11.7 (±8.0)
Total	33.6 (±5.6)	22.9 (±4.9)	15.7 (±2.5)	16.0 (±2.8)

*Ever use of cigarettes was determined by asking, "Have you ever tried cigarette smoking, even one or two puffs?" Ever use of cigars was determined by asking, "Have you ever tried smoking cigars, cigarillos, or little cigars, even one or two puffs?" Ever use of smokeless tobacco was determined by asking, "Have you ever used chewing tobacco, snuff, or dip, such as Redman, Levi Garrett, Beechnut, Skoal, Skoal Bandits, or Copenhagen?"
 † Ninety-five percent confidence interval.

TABLE MS-2. Percentage of middle school students who report current use of any tobacco product (cigarettes, cigars, smokeless tobacco, pipes, or bidis) by gender, grade, and race/ethnicity: North Carolina Youth Tobacco Survey, 2009—Mountain (Western Region).

	Any tobacco*	Cigarettes	Cigars	Smokeless tobacco	Pipes	Bidis
Gender						
Female	10.2 (±3.5)	5.1 (±2.1)	4.0 (±1.7)	4.0 (±2.2)	1.4 (±1.2)	1.9 (±1.4)
Male	14.1 (±4.2)	5.0 (±2.2)	6.6 (±2.3)	7.8 (±2.9)	2.0 (±0.8)	2.0 (±0.7)
Grade						
Sixth	8.7 (±4.2)	2.8 (±2.7)	3.1 (±1.9)	4.7 (±2.5)	2.4 (±1.7)	1.5 (±1.1)
Seventh	13.6 (±4.9)	6.5 (±3.8)	7.0 (±3.1)	5.7 (±2.8)	2.0 (±1.9)	2.5 (±1.8)
Eighth	14.2 (±3.8)	6.0 (±2.3)	5.8 (±1.8)	7.5 (±3.2)	0.7 (±0.6)	1.8 (±1.3)
Race/ethnicity						
White	13.0 (±3.3)	5.6 (±2.0)	5.0 (±1.5)	6.7 (±2.2)	1.5 (±0.9)	1.7 (±0.9)
Black	7.5 (±3.4)	2.3 (±1.7)	5.9 (±2.9)	2.1 (±1.2)	1.7 (±2.4)	1.2 (±1.7)
Hispanic	9.4 (±5.3)	3.4 (±3.2)	6.1 (±5.0)	3.9 (±4.1)	2.7 (±3.0)	4.6 (±3.5)
Other	18.9 (±15.7)	7.3 (±7.5)	11.0 (±8.8)	9.6 (±10.7)	8.3 (±8.6)	7.9 (±7.9)
Total	12.2 (±3.0)	5.1 (±1.7)	5.3 (±1.4)	6.0 (±2.0)	1.8 (±0.8)	2.0 (±0.9)

*Current use of cigarettes or cigars or smokeless tobacco or pipes or bidis or kreteks on 1 of the 30 days preceding the survey.

† Ninety-five percent confidence interval.

TABLE MS-3. Percentage of middle school students who report first using* cigarettes before 11 years of age and ever smoking 100 cigarettes in their lifetime, by gender, grade, race/ethnicity: North Carolina Youth Tobacco Survey, 2009—Mountain (Western Region).

	Ever smokers who smoked first whole cigarette before age 11	Ever smokers who smoked 100+ cigarettes in their lifetime
Gender		
Female	21.8 (±8.5)†	3.8 (±2.9)
Male	25.3 (±8.4)	7.1 (±4.7)
Grade		
Sixth	35.4 (±11.7)	0.3 (±0.6)
Seventh	23.3 (±8.1)	5.9 (±5.1)
Eighth	18.0 (±11.9)	8.0 (±5.4)
Race/ethnicity		
White	23.8 (±7.5)	5.7 (±3.7)
Black	20.7 (±16.8)	3.6 (±7.2)
Hispanic	18.8 (±20.5)	6.5 (±9.3)
Other	40.7 (±18.2)	8.4 (±11.3)
Total	23.7 (±6.1)	5.6 (±3.4)

*Age of initiation was determined by asking students these questions: "How old were you when you smoked a whole cigarette for the first time?"

† Ninety-five percent confidence interval.

TABLE MS-4. Percentage of middle school students who report smoking cigarettes on school property during the 30 days preceding the survey, by gender, grade, race/ethnicity: North Carolina Youth Tobacco Survey, 2009—Mountain (Western Region).

	Smoked on school property past 30 days
Gender	
Female	0.7 (±0.5)†
Male	1.8 (±1.1)
Grade	
Sixth	0.6 (±0.7)
Seventh	1.7 (±1.1)
Eighth	1.7 (±1.0)
Race/ethnicity	
White	1.0 (±0.5)
Black	2.4 (±1.4)
Hispanic	1.7 (±2.7)
Other	5.6 (±7.3)
Total	1.3 (±0.6)

† Ninety-five percent confidence interval.

TABLE MS-5. Percentage of middle school students who report frequently using* cigarettes, by gender, grade, race/ethnicity: North Carolina Youth Tobacco Survey, 2009—Mountain (Western Region).

Frequent cigarette smoking	
Gender	
Female	0.8 (±0.9)†
Male	1.1 (±1.0)
Grade	
Sixth	0.2 (±0.3)
Seventh	0.9 (±1.3)
Eighth	1.8 (±1.4)
Race/ethnicity	
White	0.9 (±0.7)
Black	0.8 (±1.6)
Hispanic	1.4 (±1.9)
Other	3.4 (±6.9)
Total	1.0 (±0.8)

* Smoked cigarettes, on 20 of the 30 days preceding the survey

† Ninety-five percent confidence interval.

TABLE MS-6. Percentage of middle school current smoking students who report their primary sources of cigarettes, by social source, direct purchase, and other sources: North Carolina Youth Tobacco Survey, 2009—Mountain (Western Region).

Current Smoker	
Social Sources:	
Gave someone else money to buy them for me	26.3 (±6.5)†
Borrowed (or bummed) them from someone else	26.5 (±9.8)
Person 18 years or older gave them to me	7.3 (±6.4)
Direct Purchase:	
Bought them in a store such as a convenience store, supermarket, discount store, or gas station	3.5 (±3.3)
Bought them from a vending machine	0.2 (±0.4)
Other Sources:	
Took them from store or family member	22.9 (±14.1)
Got them some other way	13.3 (±8.5)
Total	100.0

† Ninety-five percent confidence interval.

TABLE MS-7. Percentage of middle school students who report smoking intentions, perceptions about smoking and susceptibility* to start smoking, by gender, grade, and race/ethnicity: North Carolina Youth Tobacco Survey, 2009—Mountain (Western Region).

	Never smoked who will not try a cigarette soon	Never smoked who will not be smoking cigarettes during the next year	Never smoked who definitely will not smoke if one of their best friends offers them a cigarette	Have been told by at least one parent (or guardian) about the dangers of tobacco use	Think people can get addicted to using tobacco just like getting addicted to cocaine or heroin	Think young people who smoke cigarettes have more friends	Think smoking cigarettes makes young people look cool or fit in	Never smokers susceptible to start smoking
Gender								
Female	96.4 (±2.2) †	92.3 (±2.7)	89.1 (±3.5)	71.4 (±3.0)	92.9 (±1.9)	21.4 (±4.7)	12.3 (±2.7)	14.3 (±3.8)
Male	93.7 (±2.1)	83.1 (±4.2)	84.8 (±2.8)	70.8 (±3.8)	89.9 (±2.2)	19.9 (±3.5)	14.1 (±2.7)	24.3 (±4.5)
Grade								
Sixth	96.3 (±2.3)	89.7 (±1.6)	90.3 (±2.5)	70.7 (±5.2)	90.4 (±2.8)	19.3 (±4.2)	11.6 (±2.1)	14.2 (±3.1)
Seventh	93.1 (±4.0)	89.8 (±4.9)	87.6 (±4.8)	71.1 (±4.4)	89.5 (±3.6)	23.0 (±5.4)	15.1 (±3.9)	19.8 (±8.2)
Eighth	95.6 (±2.5)	83.2 (±5.2)	82.5 (±4.7)	71.6 (±3.3)	94.2 (±2.6)	19.7 (±3.7)	13.1 (±3.8)	24.5 (±5.4)
Race/ethnicity								
White	95.7 (±2.0)	88.1 (±3.0)	87.3 (±3.0)	70.9 (±2.8)	92.2 (±1.4)	18.8 (±3.2)	12.1 (±2.0)	18.3 (±3.8)
Black	91.2 (±4.5)	90.6 (±6.1)	93.4 (±3.5)	69.1 (±5.8)	87.4 (±3.9)	26.6 (±5.7)	19.1 (±6.0)	16.9 (±5.1)
Hispanic	93.5 (±3.8)	81.7 (±5.5)	79.3 (±6.2)	81.2 (±8.7)	90.9 (±6.2)	30.8 (±10.5)	14.9 (±7.3)	29.0 (±6.4)
Other	95.9 (±5.2)	82.3 (±8.6)	84.9 (±9.0)	60.4 (±9.6)	89.9 (±3.9)	22.7 (±11.0)	16.3 (±8.0)	20.7 (±8.7)
Total	95.1 (±1.7)	87.7 (±2.7)	86.9 (±2.4)	71.1 (±2.2)	91.4 (±1.3)	20.7 (±2.5)	13.3 (±2.1)	19.3 (±3.2)

* Students were considered not susceptible if they answered, “No, will not try a cigarette soon” and “Definitely no, will not smoke in the next year” and “Definitely no, would not smoke if best friend offered.” All other students were considered susceptible.

† Ninety-five percent confidence interval.

TABLE MS-8. Percentage of middle school students who report media and advertising influence regarding tobacco and receptivity to tobacco advertising*, by gender, grade, and race/ethnicity: North Carolina Youth Tobacco Survey, 2009—Mountain (Western Region).

	Saw or heard anti-smoking commercials during the past 30 days	Watch TV or movies who see actors using tobacco (most or some of the time)	Use Internet and see Internet ads for tobacco products (most or some of the time)	Use Internet, watch TV, or go to movies who see (most or some of the time) ads for tobacco products	Receptive to tobacco advertising
Gender					
Female	62.8 (±3.1)†	71.8 (±3.9)	46.1 (±5.1)	78.2 (±3.2)	4.5 (±1.5)
Male	56.7 (±3.7)	75.8 (±4.0)	38.3 (±6.0)	79.7 (±3.4)	9.3 (±2.0)
Grade					
Sixth	60.9 (±4.5)	65.2 (±6.5)	38.3 (±4.9)	72.0 (±5.1)	3.3 (±1.6)
Seventh	57.3 (±6.1)	74.4 (±3.8)	41.7 (±6.9)	80.3 (±3.2)	9.0 (±3.0)
Eighth	61.1 (±5.5)	81.2 (±3.2)	46.6 (±6.0)	84.3 (±3.8)	8.2 (±3.1)
Race/ethnicity					
White	59.6 (±3.6)	73.7 (±3.6)	41.6 (±4.4)	78.7 (±2.7)	7.4 (±1.8)
Black	62.8 (±4.7)	77.0 (±7.4)	47.1 (±8.8)	81.6 (±6.7)	5.0 (±4.0)
Hispanic	60.7 (±9.4)	69.3 (±11.8)	39.1 (±9.6)	77.5 (±8.0)	2.4 (±2.7)
Other	47.3 (±8.9)	72.5 (±9.1)	44.4 (±10.7)	77.1 (±8.6)	10.6 (±5.2)
Total	59.7 (±2.7)	73.7 (±2.7)	42.3 (±4.1)	79.0 (±2.4)	6.9 (±1.5)

The percentage of students who received anything with a tobacco company name or picture on it AND who would (Definitely Yes or Probably Yes) use or wear something with a tobacco company name or picture on it.

† Ninety-five percent confidence interval.

TABLE MS-9. Percentage of middle school students who report exposure to anti-tobacco education in school or community in the past year, by gender, grade, and race/ethnicity: North Carolina Youth Tobacco Survey, 2009—Mountain (Western Region).

	Were taught about the dangers of tobacco use at school	At school this year practiced ways to say 'No' to tobacco
Gender		
Female	71.4 (±3.0)†	23.4 (±5.8)
Male	70.8 (±3.8)	24.8 (±3.2)
Grade		
Sixth	70.7 (±5.2)	23.1 (±7.2)
Seventh	71.1 (±4.4)	27.1 (±7.6)
Eighth	71.6 (±3.3)	22.1 (±3.4)
Race/ethnicity		
White	70.9 (±2.8)	22.2 (±3.2)
Black	69.1 (±5.8)	33.8 (±6.8)
Hispanic	81.2 (±8.7)	32.7 (±10.0)
Other	60.4 (±9.6)	17.6 (±6.3)
Total	71.1 (±2.2)	24.1 (±3.2)

† Ninety-five percent confidence interval.

TABLE MS-10. Percentage of middle school never smoking students who report they were in the same room or rode in car with someone who was smoking on 1 of the past 7 days, by gender, grade, race/ethnicity: North Carolina Youth Tobacco Survey, 2009—Mountain (Western Region).

	Were in the same room with someone who was smoking a cigarette on 1+ days during past 7 days	Rode in the same car with someone who was smoking a cigarette on 1+ days during past 7 days
Gender		
Female	43.6 (±7.1)†	33.2 (±5.1)
Male	48.2 (±5.9)	35.1 (±6.0)
Grade		
Sixth	44.8 (±5.6)	33.3 (±5.4)
Seventh	44.5 (±9.9)	34.7 (±9.6)
Eighth	48.4 (±9.8)	34.5 (±8.5)
Race/ethnicity		
White	48.1 (±6.3)	35.2 (±5.5)
Black	43.4 (±9.8)	36.2 (±7.6)
Hispanic	22.7 (±9.6)	20.9 (±8.9)
Other	46.9 (±13.7)	21.9 (±11.5)
Total	45.8 (±5.5)	34.1 (±4.7)

† Ninety-five percent confidence interval.

TABLE MS-11. Percentage of middle school never and current smoking students who live with someone who currently smokes cigarettes, by gender, grade, and race/ethnicity: North Carolina Youth Tobacco Survey, 2009—Mountain (Western Region).

	Never Smoker	Current Smoker
Gender		
Female	39.1 (±6.8)†	73.4 (±18.6)
Male	40.6 (±7.1)	76.6 (±14.2)
Grade		
Sixth	40.2 (±5.8)	80.0 (±32.2)
Seventh	37.8 (±13.0)	84.9 (±12.3)
Eighth	41.2 (±8.4)	61.3 (±24.1)
Race/ethnicity		
White	40.4 (±7.1)	76.9 (±15.6)
Black	42.7 (±11.6)	100.0 (±0.0)
Hispanic	31.1 (±11.8)	26.7 (±44.5)
Other	33.2 (±11.2)	46.2 (±52.5)
Total	39.7 (±6.2)	74.9 (±11.9)

† Ninety-five percent confidence interval.

TABLE MS-12. Percentage of middle school current smoking students who report quitting perceptions, intention to quit and cessation practices, by gender, grade, and race/ethnicity: North Carolina Youth Tobacco Survey, 2009—Mountain (Western Region).

	Who want to stop smoking cigarettes	Tried to quit during at least once in the past 12 months-	When they last tried to quit, stayed off cigarettes for less than 30 days	Have ever participated in a program to help quit using tobacco
Gender				
Female	44.4 (±16.7)†	79.2 (±17.0)	40.2 (±17.2)	2.9 (±5.8)
Male	30.4 (±23.4)	45.2 (±22.4)	29.4 (±17.9)	17.7 (±15.3)
Grade				
Sixth	23.8 (±11.3)	69.8 (±24.0)	24.6 (±15.8)	30.9 (±23.2)
Seventh	34.3 (±22.5)	52.2 (±24.0)	37.1 (±23.2)	4.3 (±7.4)
Eighth	45.4 (±24.3)	62.3 (±19.7)	39.9 (±16.4)	6.1 (±11.7)
Race/ethnicity				
White	37.3 (±13.6)	64.3 (±12.6)	34.8 (±13.4)	11.2 (±10.2)
Black	49.8 (±69.3)	17.3 (±22.2)	30.6 (±65.8)	0.0 (±0.0)
Hispanic	37.0 (±64.6)	75.8 (±31.4)	69.7 (±34.0)	0.0 (±0.0)
Other	17.2 (±34.2)	10.6 (±20.8)	40.0 (±26.6)	6.2 (±11.6)
Total	37.2 (±12.5)	60.1 (±11.9)	35.9 (±13.5)	10.4 (±9.6)

† Ninety-five percent confidence interval.

TABLE MS-13. Percentage of middle school never and current smoking students who report smoking perceptions, by gender, grade, and race/ethnicity: North Carolina Youth Tobacco Survey, 2009—Mountain (Western Region).

“Think young people who smoke cigarettes have more friends”

	Never Smoker	Current Smoker
Gender		
Female	17.1 (±4.7)†	56.4 (±21.7)
Male	17.4 (±2.9)	39.7 (±14.2)
Grade		
Sixth	16.2 (±3.6)	25.4 (±15.5)
Seventh	19.6 (±6.9)	57.4 (±16.8)
Eighth	16.2 (±5.6)	49.4 (±22.7)
Race/ethnicity		
White	15.2 (±3.9)	45.4 (±14.8)
Black	27.6 (±7.5)	75.1 (±34.6)
Hispanic	27.1 (±12.6)	68.3 (±40.8)
Other	10.6 (±6.3)	62.3 (±24.8)
Total	17.4 (±2.9)	48.2 (±13.8)

† Ninety-five percent confidence interval.

TABLE MS-14. Percentage of middle school never and current smoking students who report smoking perceptions, by gender, grade, and race/ethnicity: North Carolina Youth Tobacco Survey, 2009—Mountain (Western Region).

“Think it is safe to smoke a year or two, as long as you quit after that”

	Never Smoker	Current Smoker
Gender		
Female	3.1 (±1.0)†	16.2 (±15.8)
Male	3.7 (±1.6)	26.8 (±18.3)
Grade		
Sixth	4.0 (±2.2)	11.2 (±12.4)
Seventh	3.0 (±2.6)	29.1 (±22.3)
Eighth	3.2 (±2.2)	18.2 (±16.9)
Race/ethnicity		
White	2.5 (±0.9)	20.3 (±15.7)
Black	9.7 (±2.1)	0.0 (±0.0)
Hispanic	4.0 (±6.0)	24.7 (±40.8)
Other	5.9 (±4.2)	63.8 (±45.3)
Total	3.4 (±0.8)	21.5 (±14.0)

† Ninety-five percent confidence interval.

TABLE HS-1. Percentage of high school students who report ever using* any tobacco product (cigarettes, cigars, smokeless tobacco) by gender, grade, and race/ethnicity: North Carolina Youth Tobacco Survey, 2009—Mountain (Western Region).

	Any tobacco	Cigarettes	Cigars	Smokeless tobacco
Gender				
Female	54.6 (±6.6)	48.7 (±7.4)	30.4 (±5.2)	15.8 (±4.5)
Male	64.4 (±6.9)	48.8 (±6.2)	44.5 (±5.5)	39.7 (±7.1)
Grade				
Ninth	50.3 (±7.4)	37.2 (±5.5)	28.6 (±6.6)	27.0 (±8.4)
Tenth	58.5 (±5.8)	46.1 (±7.2)	33.7 (±4.3)	27.1 (±5.7)
Eleventh	65.5 (±8.3)	55.8 (±8.5)	45.2 (±5.8)	27.3 (±8.8)
Twelfth	67.7 (±10.9)	60.4 (±11.8)	46.0 (±9.1)	31.2 (±10.9)
Race/ethnicity				
White	59.4 (±6.2)	49.0 (±6.3)	36.8 (±5.2)	30.3 (±6.1)
Black	63.2 (±14.7)	47.2 (±17.1)	44.9 (±11.1)	20.6 (±8.9)
Hispanic	57.7 (±15.0)	43.6 (±14.9)	32.1 (±17.9)	7.9 (±7.3)
Other	57.0 (±16.6)	56.8 (±16.3)	40.9 (±12.3)	24.6 (±10.7)
Total	59.6 (±6.1)	48.8 (±6.2)	37.5 (±4.5)	27.9 (±5.4)

*Ever use of cigarettes was determined by asking, "Have you ever tried cigarette smoking, even one or two puffs?" Ever use of cigars was determined by asking, "Have you ever tried smoking cigars, cigarillos, or little cigars, even one or two puffs?" Ever use of smokeless tobacco was determined by asking, "Have you ever used chewing tobacco, snuff, or dip, such as Redman, Levi Garrett, Beechnut, Skoal, Skoal Bandits, or Copenhagen?"
 † Ninety-five percent confidence interval.

TABLE HS-2. Percentage of high school students who report current use of any tobacco product (cigarettes, cigars, smokeless tobacco, pipes, or bidis) by gender, grade, and race/ethnicity: North Carolina Youth Tobacco Survey, 2009—Mountain (Western Region).

	Any tobacco*	Cigarettes	Cigars	Smokeless tobacco	Pipes	Bidis
Gender						
Female	26.1 (±4.1)	19.5 (±4.1)	11.0 (±2.8)	4.4 (±1.7)	2.8 (±2.6)	3.2 (±2.2)
Male	35.1 (±5.9)	18.3 (±4.7)	17.0 (±3.7)	20.9 (±5.9)	5.2 (±2.0)	4.7 (±2.4)
Grade						
Ninth	26.4 (±6.2)	11.8 (±3.5)	11.3 (±4.2)	13.3 (±5.4)	6.0 (±3.2)	5.0 (±3.8)
Tenth	28.9 (±6.9)	15.6 (±4.1)	13.8 (±3.5)	10.1 (±6.1)	3.1 (±2.9)	2.9 (±2.0)
Eleventh	34.1 (±7.9)	23.8 (±7.1)	17.4 (±4.7)	13.4 (±6.2)	5.3 (±2.9)	4.3 (±2.7)
Twelfth	36.3 (±9.2)	27.9 (±7.9)	15.5 (±6.9)	15.7 (±9.1)	2.3 (±1.6)	4.3 (±3.0)
Race/ethnicity						
White	30.9 (±4.0)	19.4 (±4.0)	13.8 (±3.0)	13.9 (±3.6)	3.7 (±2.3)	3.5 (±1.8)
Black	36.2 (±12.1)	19.4 (±10.5)	19.5 (±6.5)	11.0 (±8.1)	6.3 (±4.6)	7.6 (±5.8)
Hispanic	16.5 (±8.6)	7.0 (±5.9)	6.6 (±3.7)	1.3 (±2.4)	8.0 (±6.7)	6.4 (±6.2)
Other	35.7 (±9.6)	24.0 (±17.6)	18.3 (±11.5)	15.2 (±10.3)	6.6 (±7.1)	3.9 (±5.4)
Total	30.8 (±3.5)	18.9 (±3.2)	14.2 (±3.0)	12.9 (±3.4)	4.3 (±2.2)	4.1 (±1.9)

*Current use of cigarettes or cigars or smokeless tobacco or pipes or bidis or kreteks on 1 of the 30 days preceding the survey.

† Ninety-five percent confidence interval.

TABLE HS-3. Percentage of high school students who report first using* cigarettes before 11 years of age and ever smoking 100 cigarettes in their lifetime, by gender, grade, race/ethnicity: North Carolina Youth Tobacco Survey, 2009—Mountain (Western Region).

	Ever smokers who smoked first whole cigarette before age 11	Ever smokers who smoked 100+ cigarettes in their lifetime
Gender		
Female	10.6 (±3.9)†	24.0 (±7.5)
Male	13.9 (±4.9)	26.1 (±6.8)
Grade		
Ninth	18.2 (±7.9)	16.5 (±5.4)
Tenth	15.1 (±6.0)	19.1 (±10.8)
Eleventh	8.0 (±4.4)	24.0 (±6.0)
Twelfth	9.1 (±5.3)	38.1 (±9.5)
Race/ethnicity		
White	12.2 (±3.0)	26.4 (±5.2)
Black	17.6 (±13.3)	17.2 (±11.8)
Hispanic	0.0 (±0.0)	8.4 (±10.3)
Other	13.8 (±18.4)	40.9 (±35.7)
Total	12.3 (±2.9)	25.1 (±4.4)

*Age of initiation was determined by asking students these questions: "How old were you when you smoked a whole cigarette for the first time?"

† Ninety-five percent confidence interval.

TABLE HS-4. Percentage of high school students who report smoking cigarettes on school property during the 30 days preceding the survey, by gender, grade, race/ethnicity: North Carolina Youth Tobacco Survey, 2009—Mountain (Western Region).

	Smoked on school property past 30 days
Gender	
Female	6.2 (±3.3)†
Male	6.4 (±2.8)
Grade	
Ninth	3.7 (±2.1)
Tenth	4.5 (±1.5)
Eleventh	9.6 (±6.3)
Twelfth	9.3 (±4.2)
Race/ethnicity	
White	6.5 (±2.0)
Black	4.9 (±5.4)
Hispanic	5.6 (±5.0)
Other	12.5 (±10.2)
Total	6.4 (±2.1)

† Ninety-five percent confidence interval.

TABLE HS-5. Percentage of high school students who report frequently using* cigarettes, by gender, grade, race/ethnicity: North Carolina Youth Tobacco Survey, 2009—Mountain (Western Region).

Frequent cigarette smoking	
Gender	
Female	8.2 (3.5)†
Male	6.8 (±3.1)
Grade	
Ninth	3.0 (±2.1)
Tenth	6.5 (±2.9)
Eleventh	8.7 (±4.0)
Twelfth	13.9 (±5.1)
Race/ethnicity	
White	8.3 (±2.6)
Black	5.6 (±5.9)
Hispanic	0.0 (±0.0)
Other	6.5 (±9.4)
Total	7.5 (±2.3)

* Smoked cigarettes, on 20 of the 30 days preceding the survey

† Ninety-five percent confidence interval.

TABLE HS-6. Percentage of high school current smoking students who report their primary sources of cigarettes, by social source, direct purchase, and other sources: North Carolina Youth Tobacco Survey, 2009—Mountain (Western Region).

Current Smoker	
Social Sources:	
Gave someone else money to buy them for me	26.9 (±4.8)†
Borrowed (or bummed) them from someone else	25.0 (±4.4)
Person 18 years or older gave them to me	10.4 (±4.2)
Direct Purchase:	
Bought them in a store such as a convenience store, supermarket, discount store, or gas station	19.3 (±7.2)
Bought them from a vending machine	1.4 (±1.5)
Other Sources:	
Took them from store or family member	6.8 (±3.2)
Got them some other way	10.2 (±3.4)
Total	100.0

† Ninety-five percent confidence interval.

TABLE HS-7. Percentage of high school students who report smoking intentions and perceptions about smoking to initiate smoking, by gender, grade, and race/ethnicity: North Carolina Youth Tobacco Survey, 2009—Mountain (Western Region).

	Never smoked who will not try a cigarette soon	Never smoked who will definitely not smoke cigarettes during the next year	Never smoked who think they will not smoke if one of their best friends offers them a cigarette	Have been told by at least one parent (or guardian) about the dangers of tobacco use	Think people can get addicted to using tobacco just like getting addicted to cocaine or heroin	Think young people who smoke cigarettes have more friends	Think smoking cigarettes makes young people look cool or fit in	Never smokers who are susceptible to start smoking
Gender								
Female	98.6 (±1.5)†	87.1 (±3.5)	86.8 (±2.9)	62.4 (±4.1)	94.7 (±1.6)	19.7 (±3.6)	11.3 (±2.0)	18.0 (±3.6)
Male	97.9 (±2.1)	84.0 (±4.2)	84.9 (±2.6)	66.0 (±7.6)	85.6 (±3.1)	22.4 (±6.4)	17.1 (±6.2)	20.3 (±5.7)
Grade								
Ninth	98.1 (±1.8)	82.8 (±4.7)	81.7 (±5.1)	69.0 (±7.7)	88.4 (±3.1)	22.8 (±6.1)	15.8 (±8.2)	23.7 (±5.8)
Tenth	98.1 (±3.6)	84.5 (±5.7)	89.3 (±6.7)	67.5 (±6.9)	91.7 (±4.8)	23.2 (±5.0)	12.0 (±3.2)	18.6 (±7.0)
Eleventh	98.5 (±2.0)	82.2 (±5.1)	80.7 (±9.4)	66.9 (±8.8)	90.8 (±3.9)	20.3 (±5.4)	14.2 (±3.8)	22.6 (±8.3)
Twelfth	98.3 (±2.6)	96.8 (±4.4)	95.2 (±4.3)	50.5 (±7.1)	89.9 (±5.6)	17.0 (±9.0)	15.0 (±6.4)	6.4 (±5.5)
Race/ethnicity								
White	98.4 (±1.3)	85.2 (±3.4)	85.9 (±2.7)	64.4 (±6.1)	90.2 (±1.6)	18.0 (±3.3)	13.7 (±4.1)	19.1 (±4.3)
Black	100.0 (±0.0)	88.4 (±11.0)	86.1 (±11.4)	61.6 (±10.9)	88.6 (±7.8)	29.5 (±7.1)	16.4 (±5.5)	18.1 (±13.8)
Hispanic	91.7 (±10.0)	77.1 (±11.9)	77.9 (±9.2)	66.3 (±14.1)	92.3 (±6.3)	45.5 (±12.0)	18.5 (±8.6)	27.5 (±10.8)
Other	100.0 (±0.0)	100.0 (±0.0)	100.0 (±0.0)	71.5 (±17.2)	89.2 (±9.5)	30.6 (±22.8)	13.5 (±10.9)	7.1 (±12.4)
Total	98.3 (±1.4)	85.6 (±2.5)	85.9 (±2.0)	64.2 (±5.6)	90.1 (±1.9)	21.1 (±3.6)	14.2 (±3.3)	19.1 (±3.0)

* Students were considered not susceptible if they answered, "No, will not try a cigarette soon" and "Definitely no, will not smoke in the next year" and "Definitely no, would not smoke if best friend offered." All other students were considered susceptible.

† Ninety-five percent confidence interval.

TABLE HS-8. Percentage of high school students who report media and advertising influence regarding tobacco and receptivity to tobacco advertising*, by gender, grade, and race/ethnicity: North Carolina Youth Tobacco Survey, 2009—Mountain (Western Region).

	Saw or heard anti-smoking commercials during the past 30 days	Watch TV or movies who see actors using tobacco (most or some of the time)	Use Internet and see Internet ads for tobacco products (most or some of the time)	Use Internet, watch TV, or go to movies who see (most or some of the time) ads for tobacco products	Receptive to tobacco advertising
Gender					
Female	68.7 (±4.4) †	85.0 (±2.3)	43.5 (±3.6)	87.9 (±1.9)	9.1 (±2.0)
Male	59.1 (±4.5)	84.1 (±3.2)	43.4 (±6.0)	86.0 (±3.6)	20.5 (±4.8)
Grade					
Ninth	68.1 (±5.1)	88.5 (±2.9)	47.8 (±5.4)	90.7 (±2.4)	14.6 (±4.3)
Tenth	56.7 (±7.1)	83.0 (±3.2)	43.5 (±8.8)	85.1 (±5.0)	14.9 (±6.0)
Eleventh	63.1 (±5.3)	84.1 (±2.9)	43.6 (±7.4)	87.0 (±2.3)	15.6 (±3.6)
Twelfth	67.9 (±4.3)	81.6 (±3.7)	36.3 (±7.0)	83.7 (±3.7)	14.7 (±5.8)
Race/ethnicity					
White	63.8 (±3.1)	85.2 (±3.1)	44.1 (±4.6)	87.5 (±3.1)	15.5 (±3.7)
Black	64.5 (±9.4)	81.9 (±10.1)	43.7 (±12.5)	83.9 (±9.7)	16.0 (±9.2)
Hispanic	63.6 (±11.5)	79.2 (±12.1)	40.4 (±19.5)	83.4 (±12.2)	5.9 (±6.1)
Other	61.4 (±21.7)	84.9 (±8.6)	31.9 (±19.4)	83.7 (±6.4)	9.8 (±11.7)
Total	63.8 (±3.2)	84.6 (±2.3)	43.4 (±3.8)	86.9 (±2.2)	14.9 (±2.9)

* The percentage of students who received anything with a tobacco company name or picture on it AND who would (Definitely Yes or Probably Yes) use or wear something with a tobacco company name or picture on it.

† Ninety-five percent confidence interval.

TABLE HS-9. Percentage of high school students who report exposure to anti-tobacco education in school or community in the past year, by gender, grade, and race/ethnicity: North Carolina Youth Tobacco Survey, 2009—Mountain (Western Region).

	Were taught about the dangers of tobacco use at school	At school this year practiced ways to say 'No' to tobacco
Gender		
Female	29.0 (±5.2)†	10.0 (±3.2)
Male	31.3 (±3.8)	13.5 (±4.2)
Grade		
Ninth	41.9 (±6.6)	17.8 (±5.2)
Tenth	30.8 (±5.8)	11.3 (±5.2)
Eleventh	22.8 (±3.0)	9.2 (±3.4)
Twelfth	20.5 (±6.6)	6.1 (±4.1)
Race/ethnicity		
White	30.1 (±3.4)	11.2 (±2.1)
Black	31.1 (±7.5)	16.9 (±8.4)
Hispanic	29.1 (±11.5)	13.7 (±10.0)
Other	34.6 (±19.1)	5.1 (±6.1)
Total	30.2 (±3.3)	11.7 (±2.5)

† Ninety-five percent confidence interval.

TABLE HS-10. Percentage of high school never smoking students who report they were in the same room or rode in car with someone who was smoking on 1 of the past 7 days, by gender, grade, race/ethnicity: North Carolina Youth Tobacco Survey, 2009—Mountain (Western Region).

	Were in the same room with someone who was smoking a cigarette on 1+ days during past 7 days	Rode in the same car with someone who was smoking a cigarette on 1+ days during past 7 days
Gender		
Female	51.0 (±6.9)†	31.9 (±5.3)
Male	45.2 (±6.0)	26.8 (±6.7)
Grade		
Ninth	53.3 (±8.5)	34.8 (±8.8)
Tenth	50.1 (±10.2)	30.9 (±11.0)
Eleventh	39.9 (±11.4)	22.4 (±9.0)
Twelfth	42.4 (±6.9)	24.3 (±10.5)
Race/ethnicity		
White	47.0 (±4.8)	27.6 (±4.1)
Black	58.6 (±14.2)	42.5 (±11.2)
Hispanic	37.5 (±16.2)	23.9 (±13.4)
Other	59.6 (±23.2)	35.2 (±19.3)
Total	48.0 (±4.7)	29.4 (±3.3)

† Ninety-five percent confidence interval.

TABLE HS-11. Percentage of high school never and current smoking students who report living with someone who currently smokes cigarettes, grade, and race/ethnicity: North Carolina Youth Tobacco Survey, 2009—Mountain (Western Region).

	Never Smoker	Current Smoker
Gender		
Female	31.4 (±4.1)†	60.3 (±8.5)
Male	33.7 (±6.0)	60.8 (±9.7)
Grade		
Ninth	34.5 (±9.2)	64.0 (±17.4)
Tenth	31.7 (±10.4)	63.4 (±10.1)
Eleventh	32.2 (±9.9)	66.1 (±12.1)
Twelfth	28.9 (±7.9)	51.5 (±13.4)
Race/ethnicity		
White	27.8 (±3.2)	59.7 (±7.4)
Black	62.5 (±9.1)	62.6 (±30.0)
Hispanic	32.9 (±19.8)	83.5 (±31.7)
Other	48.3 (±28.6)	56.0 (±26.6)
Total	32.5 (±3.1)	60.3 (±6.6)

† Ninety-five percent confidence interval.

TABLE HS-12. Percentage of high school current smoking students who report quitting perceptions, intention to quit and cessation practices, by gender, grade, and race/ethnicity: North Carolina Youth Tobacco Survey, 2009—Mountain (Western Region).

	Who want to stop smoking cigarettes	Tried to quit during at least once in the past 12 months-	When they last tried to quit, stayed off cigarettes for less than 30 days	Have ever participated in a program to help quit using tobacco
Gender				
Female	47.1 (±9.9)†	59.4 (±8.9)	38.6 (±8.7)	13.2 (±6.1)
Male	36.9 (±10.6)	56.2 (±11.9)	43.8 (±11.4)	5.6 (±5.1)
Grade				
Ninth	34.9 (±19.4)	52.4 (±14.6)	28.0 (±25.5)	12.2 (±12.9)
Tenth	48.3 (±21.5)	38.4 (±13.0)	33.4 (±14.7)	11.1 (±5.6)
Eleventh	37.8 (±11.1)	59.9 (±13.1)	42.6 (±9.0)	12.5 (±7.7)
Twelfth	47.3 (±12.3)	73.7 (±9.2)	52.7 (±14.9)	4.2 (±5.7)
Race/ethnicity				
White	41.8 (±9.0)	59.8 (±8.2)	45.3 (±6.8)	11.3 (±6.2)
Black	40.7 (±23.1)	35.4 (±26.5)	19.1 (±19.4)	0.0 (±0.0)
Hispanic	100.0 (±0.0)	87.4 (±24.4)	0.0 (±0.0)	0.0 (±0.0)
Other	46.5 (±29.4)	58.4 (±42.0)	29.6 (±24.9)	0.0 (±0.0)
Total	42.3 (±8.8)	57.9 (±7.9)	41.1 (±6.7)	9.5 (±5.1)

† Ninety-five percent confidence interval.

TABLE HS-13. Percentage of high school never and current smoking students who report smoking perceptions, by gender, grade, and race/ethnicity: North Carolina Youth Tobacco Survey, 2009—Mountain (Western Region).

“Think young people who smoke cigarettes have more friends”

	Never Smoker	Current Smoker
Gender		
Female	10.3 (±3.9)†	41.2 (±11.0)
Male	15.8 (±4.0)	41.2 (±16.5)
Grade		
Ninth	13.6 (±5.2)	51.1 (±13.6)
Tenth	11.7 (±3.4)	60.0 (±17.0)
Eleventh	18.9 (±9.1)	29.9 (±8.0)
Twelfth	6.5 (±6.6)	32.6 (±15.0)
Race/ethnicity		
White	10.4 (±3.0)	38.8 (±9.7)
Black	18.2 (±10.0)	55.8 (±25.2)
Hispanic	41.2 (±23.0)	70.4 (±48.5)
Other	12.9 (±13.6)	42.6 (±39.9)
Total	13.1 (±2.7)	41.4 (±10.0)

† Ninety-five percent confidence interval.

TABLE HS-14. Percentage of high school never and current smoking students who report smoking perceptions, by gender, grade, and race/ethnicity: North Carolina Youth Tobacco Survey, 2009—Mountain (Western Region).

“Think it is safe to smoke a year or two, as long as you quit after that”

	Never Smoker	Current Smoker
Gender		
Female	1.7 (±1.6)†	8.9 (±6.6)
Male	6.5 (±3.1)	32.3 (±8.9)
Grade		
Ninth	6.0 (±3.9)	32.6 (±22.0)
Tenth	2.7 (±3.1)	18.5 (±14.3)
Eleventh	3.2 (±2.3)	17.2 (±7.0)
Twelfth	3.6 (±5.5)	17.3 (±10.0)
Race/ethnicity		
White	3.6 (±1.8)	16.8 (±7.3)
Black	2.7 (±4.9)	45.3 (±29.4)
Hispanic	17.1 (±15.5)	29.6 (±48.5)
Other	0.0 (±0.0)	19.7 (±22.5)
Total	4.1 (±1.8)	20.4 (±6.2)

† Ninety-five percent confidence interval.